

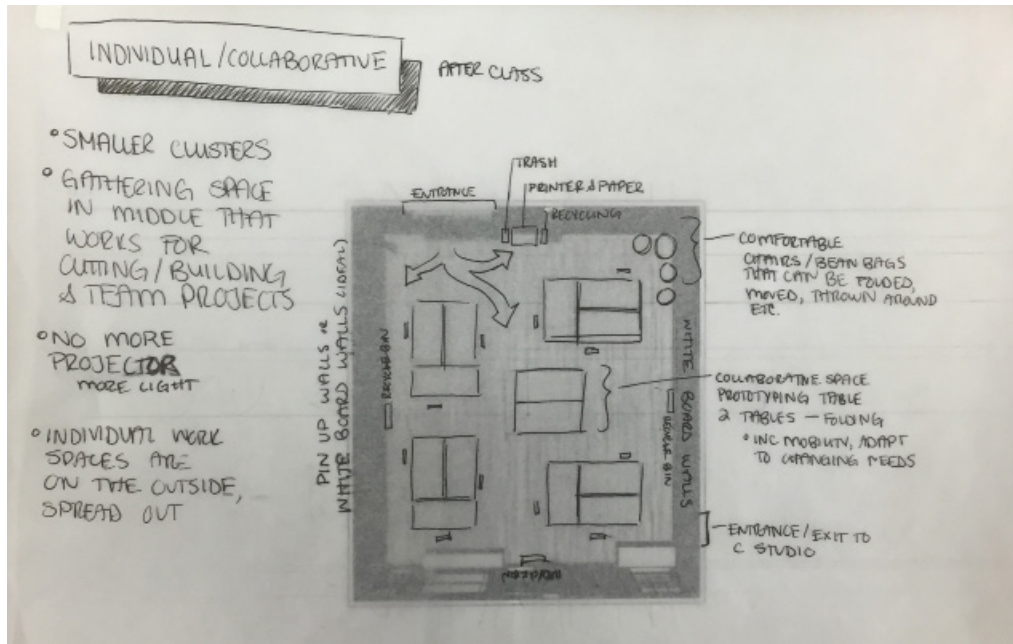
Assignment Four

Sustainable Studio Re-design

Gilly Johnson
Alex Palatucci

After Class

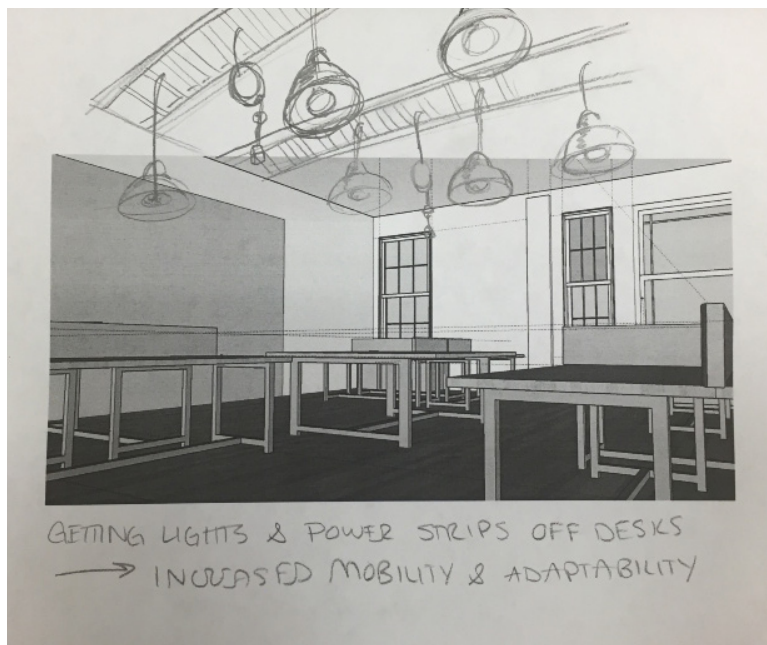
Individual and Collaborative



Smaller desk clusters allow for increased mobility because they are smaller obstacles to maneuver around.

Two extra mobile desks allow for a collaborative space as well as an area for multiple users to prototype with cardboard or foam core.

Hanging lights and power outlets get wires off of our desks and the floors, making rolling chairs and desks easier to move when relocating for team collaboration.



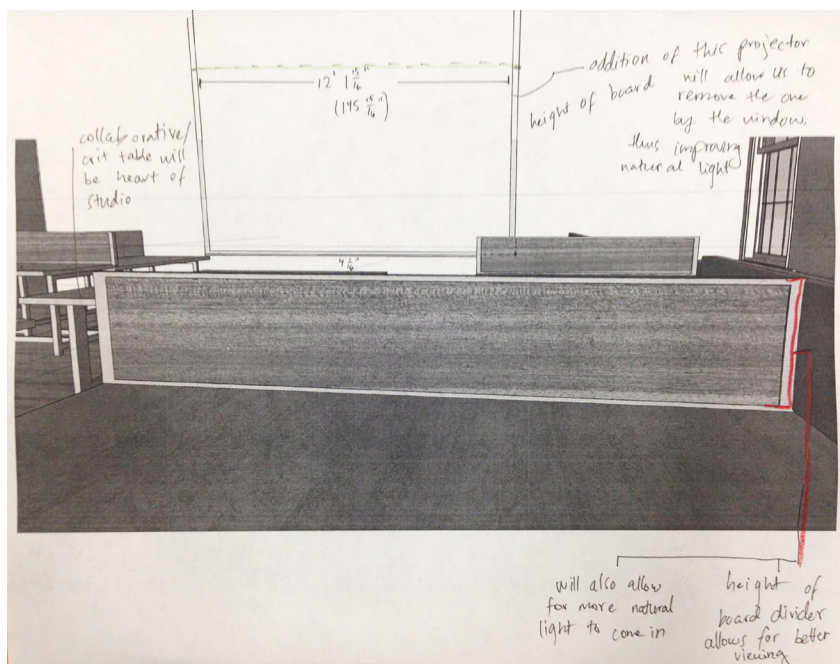
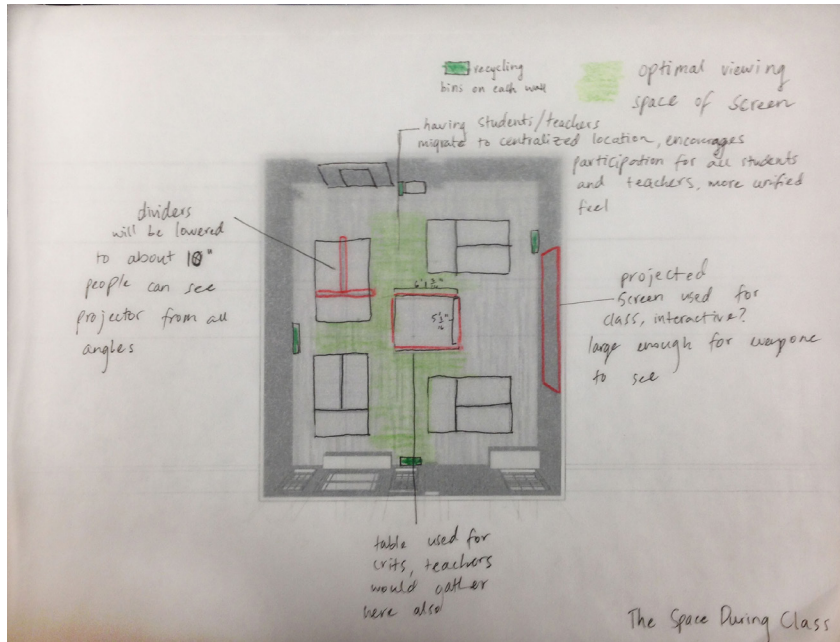
During Class Critiques and Demos

During class time, the primary kind of space being used is collaborative and critique space. The new rearrangement of desks will allow for easy mobility to a larger but unified area.

Lower dividers will allow for more student participation in class and more connectivity to other students during non-class time.

The big collaborative table in the middle of the space will be used for demo-ing prototyping or models that are due for class.

Large projected screen will be placed in the middle of the wall for optimal viewing.



Objectives when meeting with Azizan Aziz

how do we complete a sustainability analysis

light/temperature energy consumption

how do they get data?

what data is received?

what is done with the data?

utilizing the ceiling lights, fabric

understanding layout's relationship with collaboration